



BIRABAHN

WEST WALLSEND HIGH SCHOOL

AN OVERVIEW FOR
STUDENTS AND
FAMILIES



Welcome to Birabahn

BIRABAHN: PHILOSOPHY

Our Birabahn classes aim to re-engage young people with their learning through positive connections and experiences in a highly supported flexible learning environment.

The Birabahn classes are led by skilled teachers and support staff who bring a wealth of experience and expertise in differentiated teaching and learning, behaviour, restorative practices, and wellbeing. They are passionate about building positive relationships with young people who have disengaged from their learning in a mainstream setting.

PROGRAM SNAPSHOT

Birabahn offers places primarily to students from Year 7-10 and can accommodate senior students on a case-by-case basis.

Birabahn is made up of three BD support classes. Students apply to attend Birabahn through the access request process – this application is completed by a student’s local “home” school. Placements are determined by regional panels which meet twice a term.

If students are successful in their placement they remain enrolled in their home school and attend Birabahn as a shared enrolment with West Wallsend High School for the duration of the program.

Students engage in teaching and learning programs which **offer flexible outcomes to ensure learning is personalised to reflect the capabilities, interests and goals of each student.**

Students attend Birabahn for core learning from 9am until 1.45pm daily with afternoon sessions (up to 3.20pm) being an optional opportunity for specialised programs on a case-by-case basis.

Most students attend Birabahn for 20 weeks. The duration beyond 20 weeks is personalised for students based on their goals and explicit needs and in consultation with families and home schools.

Student placements are reviewed every five weeks at case management meetings involving Birabahn and the student’s local school to ensure students are successfully engaging in the program.

Students who live out of area may be eligible for assisted transport which can be discussed as part of the enrolment process.



THE BIRABAHN FRAMEWORK

1. Personalised learning
2. Case management
3. Individual wellbeing
4. Connecting with community
5. Aspirations and transition

1. Personalised learning

At Birabahn our cross-curricular teaching and learning programs are mostly project based with a focus on:

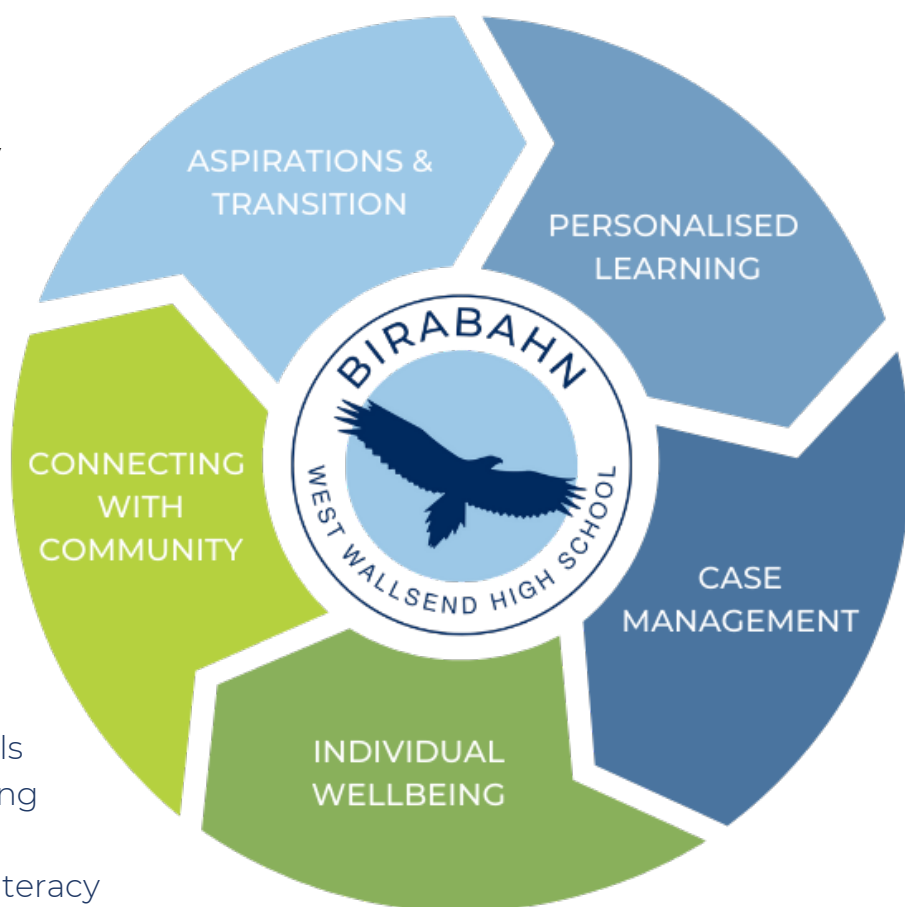
- Building positive relationships through personal and social capabilities
- Development of prosocial skills
- High interest *hands on* learning
- Personal interest projects
- Strengthening foundational literacy and numeracy skills
- Creative industries and technology
- Restoration and sustainability
- Work education

Students in Stage 5 and 6 will engage in learning outcomes that support their RoSA or HSC attainment in negotiation with their home school. An ATAR HSC pathway is not offered at Birabahn.

2. Case management

Individual education plans (IEP), student support plans (SSP) and individual transition plans (ITP) will be developed and closely monitored as part of the Birabahn case management process. Aboriginal and Torres Strait Islander students will also be provided with a Personalised Learning Pathway (PLP).

Students will be assigned a case manager who will be their go-to person daily. This case manager will build a relationship with students, families, the home school and external stakeholders to ensure regular progress monitoring and communication with home as well as weekly reports and review meetings with the home school every five weeks.



Case managers work with our young people to support the personalisation of their learning and will advocate for students to access specialised programs and key personnel based on a student's goals and needs.

3. Individual wellbeing

At Birabahn, we aim to promote individual wellbeing through a growth mindset.

Personal, social and emotional capabilities are embedded into teaching and learning practices as well as through specialised programs.

4. Connecting with community

We strive to build strong partnerships between Birabahn staff, families and a student's home school while also connecting students with a range of community participation programs to provide real world experiences and opportunities.

Students will have access to external support agencies, community service opportunities, mentors and external programs as well as a range of opportunities through TAFE, local workplaces and other organisations.



5. Aspirations and transition

During their time at Birabahn, students will be provided with an individualised roadmap to future learning, work skills programs and/or transition to employment.

Often students will transition back full-time to their home school. We also collaborate with many providers to ensure students and families have an insight into additional opportunities that may best suit a student beyond their time at Birabahn.

Transition planning and life skill development are both part of our teaching and learning and case management programs.



OTHER BIRABAHN PROGRAMS AND OPPORTUNITIES

- Breakfast club
- *Hands on Learning* program
- Wellbeing programs such as *Love Bites* and *Drum Beat*
- Cultural programs such as *Sista Speak* and *Yidaki* group
- Mentoring programs such as *Top Blokes* and *Raise*
- SAGA – sexuality and gender alliance
- Participation in sporting and creative and performing arts programs based on student interest

Students at Birabahn also have access to key personnel at West Wallsend High School such as: *school counsellors, youth worker, careers advisor, learning and support teachers and the RISE literacy and numeracy support team.*



DESIRED PROGRAM OUTCOMES

Through a holistic and individualised approach each student will navigate their own roadmap towards their goals and transition to further learning.

Following ten successful weeks as part of the first phase at Birabahn, students may have the opportunity to begin a gradual transition to their home school and/or to other educational or work pathways.

By the end of the second phase (twenty weeks) at Birabahn the program aims for students to have achieved:

- *Successful transition to home school or confirmed alternate educational or employment pathway.*
- *Increased sense of belonging and self-confidence.*
- *A range of recognised qualifications. (These are age dependent but may include: first aid certificate, white card, minimum literacy/numeracy standard achievement).*
- *Increased fundamental literacy and numeracy skills.*

Whilst we have phases to structure the program these are a guide.

We recognise that students achieve various levels of success on different timeframes. We work in partnership with students, families and the home school to adjust goals and program timeframes to best meet the needs of every student.



FAQS

How do I apply for my young person to attend Birabahn?

Work with your home school to complete an application known as an access request. This application is submitted and reviewed by a regional panel to assess your young person's suitability. Further information about specialist education settings in public schools can also be found here: <https://education.nsw.gov.au/public-schools/going-to-a-public-school/specialist-settings-in-nsw-public-schools>

How would my young person get there if I do not live near West Wallsend High School?

Students may be eligible for assisted transport. If they qualify then transport would pick them up and drop them off directly from their home to school each day.

Are there different “rules” for students in Birabahn?

All students at West Wallsend High School, including our Birabahn students, are expected to follow the same school expectations based on our PBL values of Respect, Responsibility and Excellence. Expectations are outlined in the Department of Education's Student Behaviour Code which may be found:

<https://schoolsequella.det.nsw.edu.au/file/ea084894-ada7-4b39-890c-21c4ab1e9aaf/1/behaviour-code-students-english.pdf>

Students are to be respectful of their interactions with staff and other students and take responsibility for their actions. Behaviour concerns will be managed according to the Department of Education's Student Behaviour Procedures. Further details for families may be found: <https://education.nsw.gov.au/student-wellbeing/attendance-behaviour-and-engagement/behaviour-support-toolkit/support-for-parents>

Birabahn is a ‘technology no’ zone for mobile phones. If students choose to bring their phones to school they will be collected at the start of the day to ensure students remain engaged in the activities on offer. Mobile phones will be returned to students at the end of the day.

What would my young person need to bring to Birabahn?

Students should bring their usual school supplies and lunch/recess (students may access the school canteen when required).

When starting in the Birabahn classes we will welcome every student by providing a West Wallsend High School polo shirt. Additional items may be purchased at Lowes Glendale or on the Lowes website. Financial assistance is available when needed.

Specific school supplies/resources will be provided for students as needed.

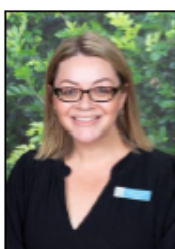


What does a week look like at Birabahn?

	MONDAY	TUESDAY	WEDS	THURSDAY	FRIDAY
9am	Connect	Connect	Connect	Connect	Connect
SESSION 1	Cooking: Breakfast Club Hands on literacy and numeracy	Cooking: Breakfast Club Hands on literacy and numeracy	Cooking: Breakfast Club Hands on literacy and numeracy	Cooking: Breakfast Club Hands on literacy and numeracy	Student-led PBL assembly Wellbeing programs
SESSION 2	Weekly goals + case mgt check-ins	Cross-KLA projects	Cross-KLA projects	Work education and skills	Community participation program
SESSION 3	Personal interest projects	Personal interest projects	Personal interest projects		
SESSION 4	PDHPE + CAPA	PDHPE + CAPA	PDHPE + CAPA		
FLEXIBLE AFTERNOON SESSION	Early finish @ 1.45pm	Alternate program <i>optional</i>	Alternate program <i>optional</i>	1-3pm sport <i>optional</i>	Alternate program <i>optional</i>

How can I find out more about Birabahn?

Speak to the Head Teacher Wellbeing or Deputy Principal at your young person's home school or contact the Birabahn team at West Wallsend High School on 4953 2111 and we will be happy to answer any questions you may have:



Krystal Bevin
PRINCIPAL



Paul Gauci
DEPUTY PRINCIPAL



Michael Chandler
DEPUTY PRINCIPAL



Shannon Sager
DEPUTY PRINCIPAL



Allison Madden
HEAD TEACHER
SPECIAL EDUCATION



INFORMATION FOR HOME SCHOOLS

If we can support you with an access request application don't hesitate to reach out to Head Teacher Support: Allison Madden on 4953 2111.

Once a student is offered a placement home schools confirm acceptance with the student's family. Following receipt of the acceptance letter, an intake and introduction interview will then take place at West Wallsend High School. We encourage home schools to be involved in this process.

Home schools can assist the transition process by providing all relevant plans and information that may support a young person to have a positive start at Birabahn.

Students in Stage 5 and 6 remain enrolled for their RoSA / HSC credential at the student's home school. Depending on the timeline of enrolment home schools should consult with Birabahn staff to confirm credential pathways. Birabahn provides a flexible project-based teaching and learning program which works towards outcomes in all core KLAs.

Birabahn case managers will provide regular progress reports and will request a review meeting with the home school every five weeks. If a young person's attendance or engagement in the program is at risk the review meeting may be brought forward. If a young person does not engage in the program successfully over an entire phase (10-week period) families and the home school will be invited to a learning support / exit review meeting.

CONTACT WEST WALLSEND HIGH SCHOOL

Location: 20 Appletree Road
West Wallsend NSW 2286

Phone: 02 4953 2111

Email: westwalls-h.school@det.nsw.edu.au

School Website: <https://westwalls-h.schools.nsw.gov.au>

Facebook: <https://www.facebook.com/westwallsendhighschool>

Principal: Krystal Bevin

Deputy Principals: Michael Chandler – Years 10 and 12
Paul Gauci - Years 7 and 9
Shannon Sager – Years 8 and 11

Head Teacher: Allison Madden

